



rosdev

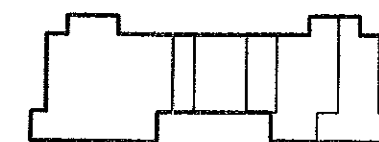
Siege Social/Head Office
7077 Ave. du Parc, suite 600
Montreal, Quebec
H3N 1X7

Tel: 514-270-7000
Fax: 514-270-6423
www.rosdev.com

IMMOBILIER/PROPERTY:

MONTPELLIER STREET DEVELOP.
470-500 Montpellier
Ville St Laurent - Quebec
H4N 2G7

PLAN CLE/PLAN KEY:



BOUL. MONTPELLIER

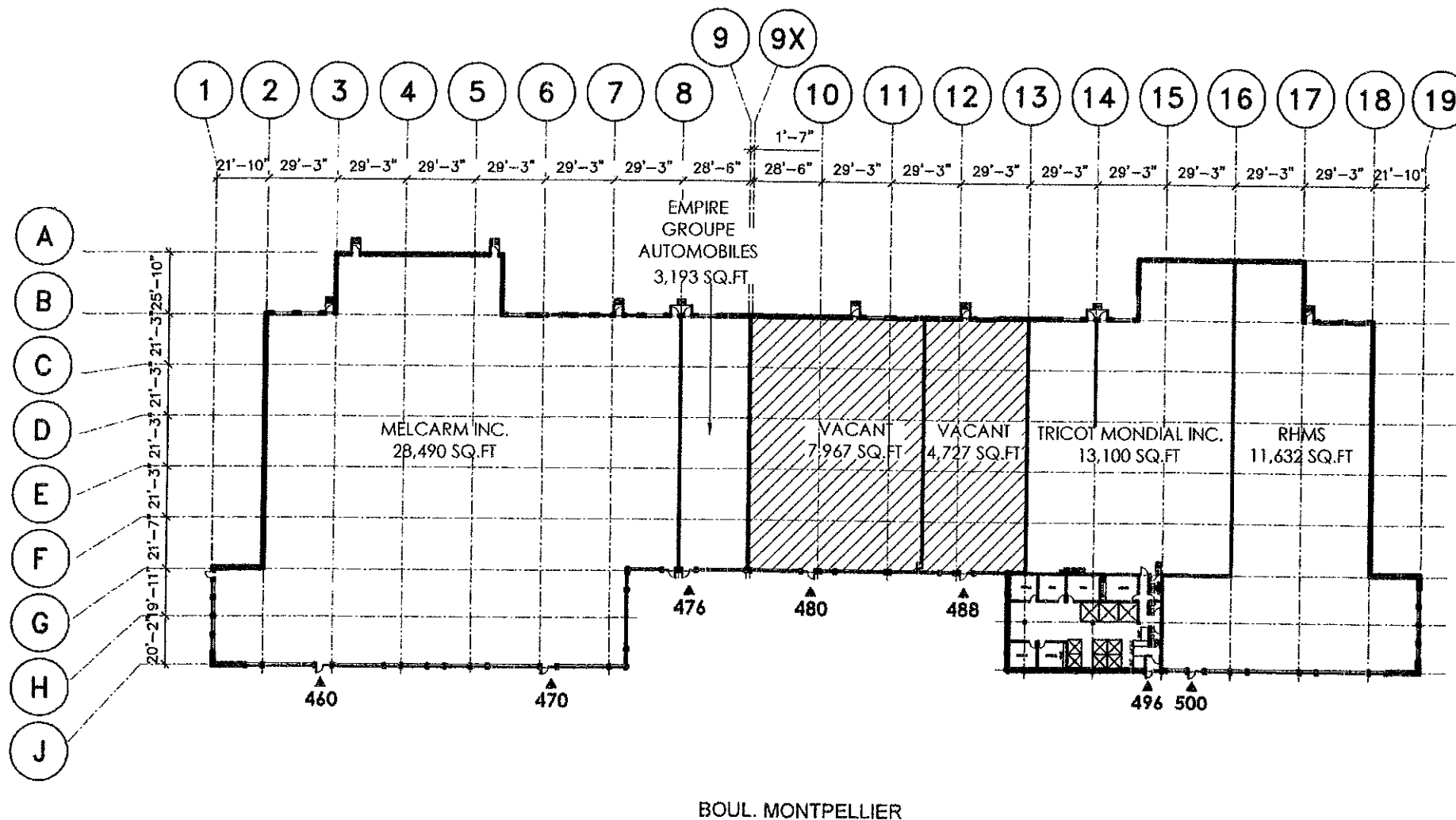
LOCATAIRE/TENANTS:

- 460 - 470 MELCARM INC.
- 476- EMPIRE GROUPE AUTOMOBILES
- 480- VACANT
- 488- VACANT
- 490 - 496 TRICOT MONDIAL INC.
- 500- RHMS

TITRE/TITLE:

PLAN D'ENSEMBLE

Dossier:	Des.poir/Dwg. by:	Des.#/Dwg#:
	T.M.	00
Date:	Scale/Echelle:	
OCT-,16,2014	1/64" = 1'-0"	



PLAN D'ENSEMBLE

1/64" = 1'-0"